

8,000 BHP – DP2, AHTS SEACOR RIGOROUS



8,000 BHP – DP2, AHTS SEACOR RIGOROUS

MAIN PARTICULARS

| | | |
|------------------|----------|------------|
| LENGTH OVERALL | 244.5 ft | 74.5 m |
| LENGTH BP | 230 ft | 70 m |
| BEAM | 56 ft | 17 m |
| DEPTH | 21 ft | 6.4 m |
| LIGHT DRAFT | 6.5 ft | 2 m |
| LOADED DRAFT | 18 ft | 5.5 m |
| SUMMER FREEBOARD | 3.5 ft | 1 m |
| LIGHTSHIP | 1,992 LT | 2,024 MT |
| DEADWEIGHT | 2,872 LT | 2,918 MT |
| TONNAGE (ITC) | GT | 2,137 tons |
| | NT | 714 tons |
| BOLLARD PULL | 118.1 LT | 120 MT |

CAPACITIES

| | | |
|------------------------------|----------------------|---------------------|
| POTABLE WATER | 23,323 USG | 88 m ³ |
| FUEL | 208,636 USG | 790 m ³ |
| BALLAST / DRILL WATER | 322,305 USG | 1220 m ³ |
| LIQUID MUD, (10) ROUND TANKS | 6063 BBLS | 964 m ³ |
| DRY BULK | 8075 ft ³ | 229 m ³ |
| ANTI-ROLL TANKS | 55,216 USG | 209 m ³ |
| SEWAGE / GREY WATER | 6,922 USG | 26 m ³ |

CARGO DECK

| | | |
|------------|-------------------------|----------------------|
| TONNAGE | 1,456 LT | 1,480 MT |
| STRENGTH | 512 lbs/ft ² | 2.5 t/m ² |
| LENGTH | 145 ft | 44.1 m |
| WIDTH | 46.7 ft | 14.2 m |
| CLEAR AREA | 6,371 ft ² | 592 m ² |

MACHINERY

| | | |
|-------------------------|--|--|
| MAIN ENGINES | 2 x Caterpillar 3608, Total: 7,268 HP (5,420 kW) | |
| AUXILIARY GENERATORS | 2 x Caterpillar 3412 (500kW each) | |
| EMERGENCY GENERATOR SET | Caterpillar 3306, 170kW | |
| AZIMUTH DRIVES | 2 x Rolls Royce, TCN 105 | |
| PROPELLERS | 4 Blades, FPP in nozzles | |
| BOW TUNNEL THRUSTER | Brunvoll FU63, 789HP (588kW) | |
| BOW COMBI THRUSTER | Ulstein TCNS 73/50 1150HP (858 kW) | |

ANCHOR HANDLING & TOWING

| | | |
|--------------------------|---|--------------------------|
| WINCH | Rolls Royce Brattvaag Hydraulic | |
| TYPE / LINE PULL MAX | Two Drum Waterfall / 295 LT (300 MT) | |
| WIRE CAPACITY EACH DRUM | 3 in x 6,562 ft | 76 mm x 2000 m |
| BRAKE CAPACITY | 393 LT | 400 MT |
| STORAGE REELS, 2 X | 19.7 LT rated pull | 20 MT rated pull |
| STORAGE REELS, WIRE ROPE | 3 in x 6,562 ft | 76 mm x 2,000 m |
| WINCH ENGINE | Caterpillar 3508, 1,150 BHP | |
| CHAIN LOCKERS, 2 X | 2 x 3,870 ft ³ | 2 x 109.5 m ³ |
| MAX RIG CHAIN | 2 x 3,287 ft (1,002 m) of 3.75 in (95mm) chain | |
| CHAIN STOPPER(S) | Triplex H-35, 350Ton SWL | |
| NORMAN PINS | 2 x | |
| SHARK JAW | Triplex H-350, 350 MT SWL | |
| TOWING PINS | Triplex S-200, 200 MT SWL | |
| STERN ROLLER | 16 ft x 8 ft, 350 MT SWL | |
| TUGGER WINCHES | Ulstein 13.6 MT line pull w/ 385 m of 35 mm wire rope | |

PERFORMANCE

| | | |
|---------------------------|------------|-------------------------|
| MAXIMUM SPEED | 14 knots | |
| CRUISING SPEED | 12 knots | |
| MAXIMUM FUEL CONSUMPTION | 334 USG/hr | 30 m ³ /24hr |
| CRUISING FUEL CONSUMPTION | 200 USG/hr | 18 m ³ /24hr |

DISCHARGE RATES

| | | |
|----------------------|---------------------------------|---------------------------------|
| DRILL WATER | 760 USG/min @ 290ft | 273 m ³ /hr @ 88m |
| FUEL | 760 USG/min @ 290ft | 273 m ³ /hr @ 88 m |
| BALLAST/ DRILL WATER | 760 USG/min @ 290ft | 273 m ³ /hr @ 88 m |
| LIQUID MUD | 2800 USG/min @ 170ft | 636 m ³ /hr @ 52m |
| DRY BULK | 740ft ³ /min @ 80PSI | 21 m ³ /min @ 5.5bar |
| BRINE | 2800 USG/min @ 170ft | 636 m ³ /hr @ 52m |

ACCOMMODATION

| | | |
|--------------------------|---------------------|---------------------|
| CABINS | 12 | |
| BERTHS | 29 | |
| MASTER | 1 person w / head | |
| OFFICERS/VIP | 8 x 2 person | |
| CREW | 3 x 4 person | |
| HEADS | 7 | |
| LOUNGE SEATING | 6 | |
| MESS SEATING | 12 | |
| WALK-IN FREEZER CAPACITY | 661 ft ³ | 18.7 m ³ |
| WALK-IN COOLER CAPACITY | 715 ft ³ | 20.2 m ³ |

ELECTRONICS & CONTROLS

| | |
|-------------------------|--|
| DYNAMIC POSITIONING | Kongsberg K-Pos, Class II System |
| DGPS | 2 x C-NAV 3050 & 2 x C-Navigator Control Display Units Fanbeam 4.2 |
| LASER RADAR | 3 x Gill Wind Observer II |
| ANEMOMETER | Kongsberg, C-Joy |
| JOYSTICK | 3 x Sperry Navigat MKI |
| GYRO | 1 x Seatex MRU-D & 1 x Seatex MRU-5 |
| MOTION REFERENCE SYSTEM | Kongsberg |
| AUTOPILOT | Furuno |
| GPS | Furuno FAR 2137 & JRC-JMA 7000 |
| RADAR(S) | Furuno |
| DEPTH SOUNDER | Coastal Explorer |
| ELECTRONIC CHART SYSTEM | Optional |
| HYDROACOUSTIC REFERENCE | |

COMMUNICATIONS

| | |
|-----------------|-----------------------|
| GMDSS | JRC Area A3 |
| SSB | ICOM & JRC |
| VHF | 2 x JRC, 1 x Standard |
| INMARSAT-C | Furuno FELCOM 15 |
| SATELLITE PHONE | Iridium |
| PHONE(S) | 1 x GSM, Broadpoint |
| NAVTEX | JRC |
| EMAIL | Globe Wireless |
| WEATHER RADIO | XM Satelite Radio |
| SATELLITE TV | Seatel |

SAFETY

| | |
|----------------------|------------------------------|
| LIFE RAFTS | 4 x 25 person |
| MOB FAST RESCUE BOAT | Norsafe 5.1, 6 person, SOLAS |

SPECIAL EQUIPMENT

| | |
|------------------------|---|
| LIQUID MUD CIRCULATION | Flygt Agitators, 10 x |
| DECK CRANE | Alaska Marine MCF 5-30 5 LT (5.1 MT) @ 30 ft (9.1 m) Ulstein Brattvaag, 12.5 MT at 10.5 m/min |
| ANCHOR WINDLASS | 2 x 5,020 lb stockless; 2 x 720 ft x 2 3/8 in chain |
| ANCHOR & CHAIN | Ships Fuel, 750 GPM w/ register & printer |
| DISCHARGE METER | Rig Fuel, 1200 GPM w/ register & printer |

DOCUMENTATION

| | |
|-----------------------|---------------------------------------|
| CLASS | ABS +A1, +AMS, DPS-2 |
| FLAG/PORT OF REGISTRY | USA / New Orleans, LA |
| SOLAS | Full |
| USCG | Sub chapter L, OSV |
| OFFICIAL NUMBER | 1096765 |
| IMO | 9236937 |
| CALL SIGN | WCZ9586 |
| YEAR BUILT | 31 Aug, 2000 |
| BUILDER | North American Shipbuilding, Hull 206 |

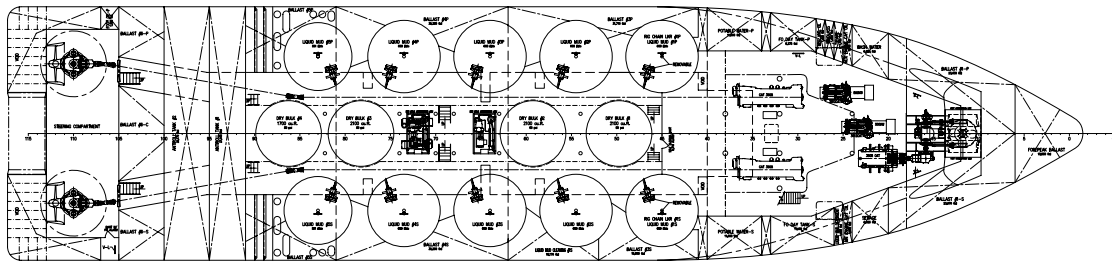
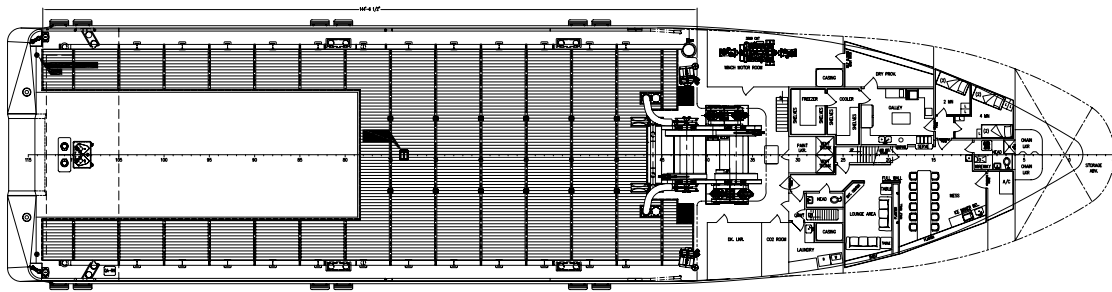
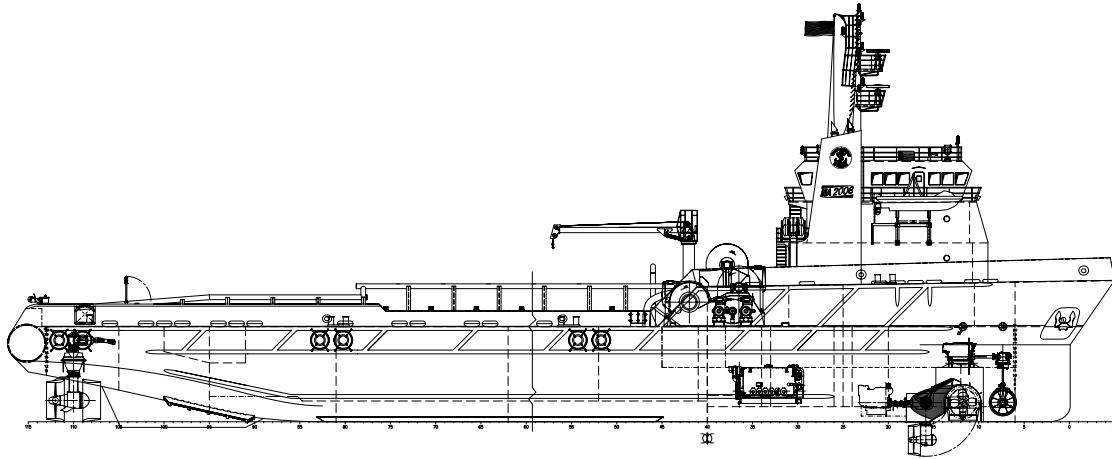
This specification is preliminary and subject to change without notice. Exact tank capacities, deadweight, deck cargo capacity and other figures that have been calculated and may change when the actual vessel is delivered.

r061311

8,000 BHP – DP2, AHTS SEACOR RIGOROUS



8,000 BHP – DP2, AHTS SEACOR RIGOROUS



DP Capability Plot

Wind angle is stepped from 0-360 degrees.

