

8,000 HP DP-1 AHTS SEABULK LUANDA



8,000 HP DP-1 AHTS SEABULK LUANDA - FIRE FIGHTER CLASS 1

DIMENSIONS

LENGTH OVERALL	65.80 m	215.87 ft
BREADTH MLD	15.00 m	49.21 ft
DEPTH	6.80 m	22.30 ft
DRAFT	5.8 m	19.03 ft
DEADWEIGHT	1886 MT	1856 LT
TONNAGE	2063 GT	

CAPACITIES

BALLAST/DRILL WATER	540 m ³	142,652 USG
POTABLE WATER	400 m ³	105,668 USG
FUEL	860 m ³	227,188 USG
LIQUID MUD	400 m ³	2,515 BBLS
DRY BULK	226 m ³	8,000 ft ³
MAX RIG CHAIN	210 m ³	7,416 ft ³

CARGO DECK

TONNAGE	800 MT	787 LT
DECK STRENGTH	5 mt/m ²	1,023 lbs/ft ²
LENGTH	34.16 m	112.07 ft
WIDTH	12.00 m	39.37 ft
CLEAR AREA	410 m ²	4,437 ft ²

TOWING & ANCHOR HANDLING

AHT WINCH	Brattvaag hydraulic double-drum waterfall 300 t line pull and 450 t brake load
AHT DRUM WIRE CAPACITY	2 x 1500 m x 76 mm wire diameter
SPOOLING DRUM	2 x 1500 m x 76 mm diam, 8 t line pull
TOW WIRE	1500 m x 76 mm wire diameter
SPARE TOW WIRE	1500 m x 76 mm wire diameter
WORKING DRUM	200 m x 76 mm diam (up to 1500 m)
CHAIN LOCKERS	200 m ³
SHARK JAW	1 Set Karm Fork 500 t SWL
TOWING PINS	1 Set Hydraulic 500 t SWL
STERN ROLLER	5.0 m x 2.0 m diameter, 400 t SWL
RIG CHAIN GYPSIES	2 x 76 mm chain
TUGGER WINCHES	2 x 15 t @ 10 m/min
CAPSTANS	2 x 10 t @ 15 m/min

MACHINERY

MAIN ENGINES	2 x MAK 9M25, 4000 BHP/2983 kW @ 750 RPM
BRAKE HORSEPOWER	8000 BHP
BOW THRUSTERS	2 x Kawasaki KT-72B3, 910 HP/680 kW, 9.8 MT Thrust
STERN THRUSTER	1 x Kawasaki KT-55B3, 603 HP/450 kW, 6.5 MT Thrust
PROPELLERS	2 x 3,300 mm four blade, CPP in nozzles, 160 RPM
RUDDERS	2 x Ulstein High Lift Flap Rudders
BOLLARD PULL	100 t continuous
AUXILIARIES GENERATORS	2 x CAT 3412, 580 ekW 450 V, 60 Hz
EMERGENCY GENERATOR	1 x CAT 3306TA, 95 ekW, 450 V, 60 Hz
SHAFT GENERATORS	2 x Leroy Somer 1200 ekW, 450 V, 60 Hz

SPEED/CONSUMPTION

MAXIMUM SPEED	14.6 knots
ECONOMIC SPEED	12.3 knots

DISCHARGE RATES

BALLAST/DRILL WATER	120 m ³ /hr	528 USG/min
POTABLE WATER	120 m ³ /hr	528 USG/min
FUEL	120 m ³ /hr	528 USG/min
LIQUID MUD	100 m ³ /hr	440 USG/min
DRY BULK (FREE AIR)	20 m ³ /min	918 ft ³ /min

ACCOMMODATION

BERTHS	42
CREW MAXIMUM	14
PASSENGERS	26
HOSPITAL	2

ELECTRONICS & CONTROLS

DYNAMIC POSITIONING	ALSTOM A-Series Control System (DP-1), ULSTEIN Poscon Joystick
DGPS	1 x TRIMBLE DSM 1321
GPS	1 x Furuno GP-90
GYRO	2 x Anschutz Standart 22
LASER RADAR	1 x CyScan MKII
ANEMOMETER	2 x Gill
GMDSS	A1 + A2 + A3
VHF	2 x Furuno RB700 / 3 x MCMURDO R2 HandHelds
RADAR(S)	2 x Furuno FAR2137 X and S Bands
INMARSAT-C	Furuno FELCOM 15
ECHO SOUNDER	Furuno FE-700
NAVTEX	MCMURDO IC NAV5 Plus

SPECIAL EQUIPMENT

FIFI PUMP	2 x 1500 m ³ /hr
MONITORS (WATE R/FOAM)	2 x 1200 m ³ /hr each remote controlled
REINFORCED PUSHER BOW	For Tanker Mooring Assistance
DRENCHING SYSTEM	Self drenching fire protection
MOB FAST RESCUE CRAFT	1 x 6 persons, 40HP with waterproof VHF
RESCUE ZONES / NETS	2 x 5 m, each side
LIFERAFT	4 x 20 persons inflatable rafts
DECK CRANE	1 x 3 t @ 21 m radius / 1 x 8 t @ 17 m

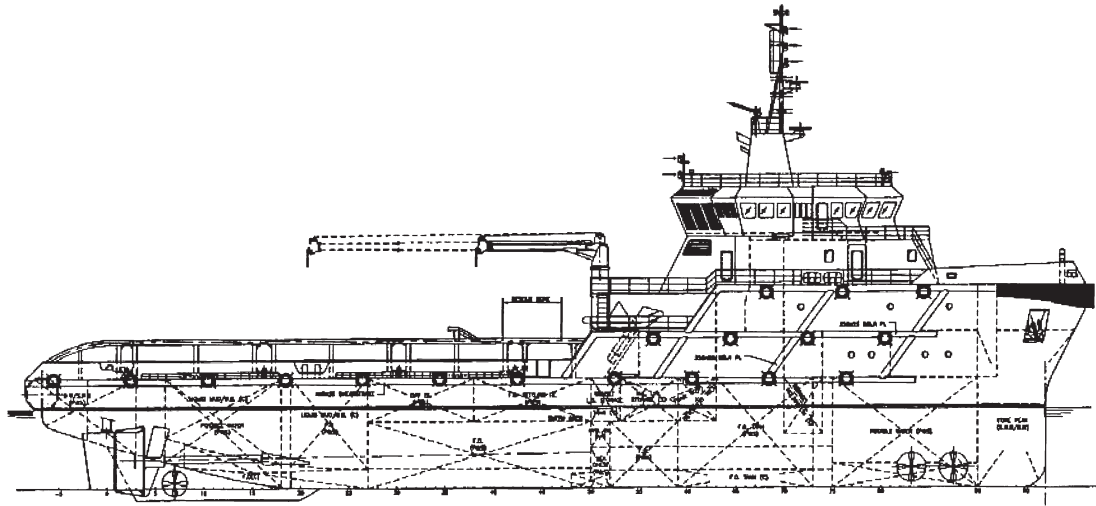
BUILT

YEAR	2005
BUILDER	Labroy, Singapore
CLASS	BV 1 *HULL *MACH Tug, Fire Fighting Ship 1, Unrestricted Navigation, *AUT-UMS, *DYNAPOS-AM/AT
FLAG	Marshall Islands
CALL SIGN	V7IU8
IMO NUMBER	9324227

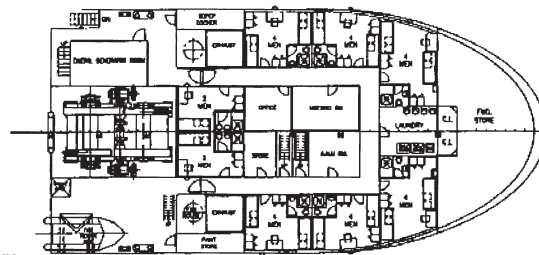
This specification is preliminary and subject to change without notice. Exact tank capacities, deadweight, deck cargo capacity and other figures that have been calculated and may change when the actual vessel is delivered.

8,000 HP DP-1 AHTS

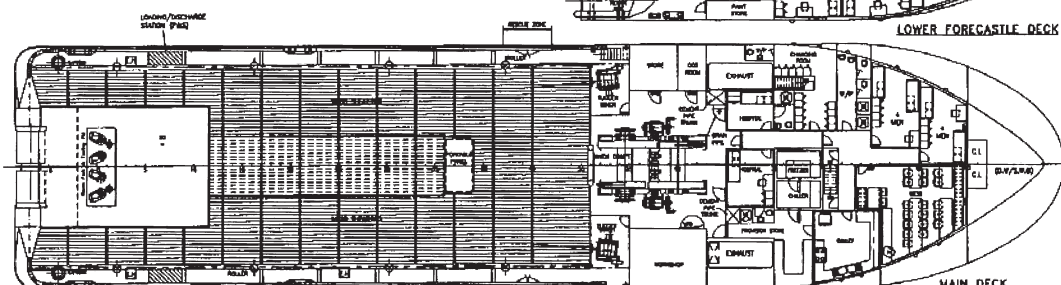
SEABULK LUANDA



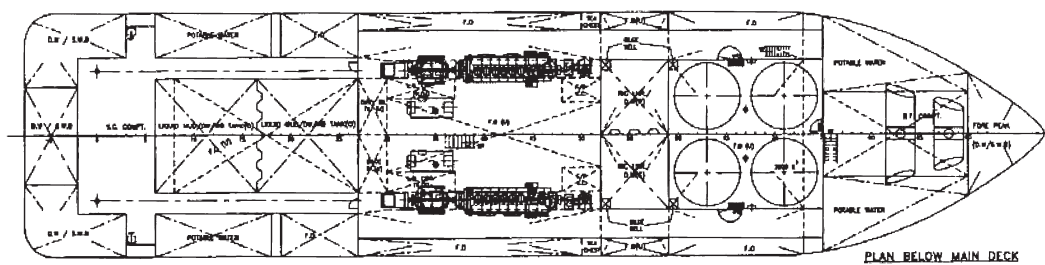
OUTBOARD PROFILE



LOWER FORECASTLE DECK



MAIN DECK



PLAN BELOW MAIN DECK

8,000 HP DP-1 AHTS SEABULK LUANDA - FIRE FIGHTER CLASS 1