

# 251' DP-2 PSV SEACOR GLORY



251' DP-2 PSV SEACOR GLORY

## MAIN PARTICULARS

LENGTH OVERALL	251.00 ft	76.50m
LENGTH BP	235.00 ft	71.63m
BEAM	54.00 ft	16.46 m
DEPTH	23.00 ft	7.01m
LIGHT DRAFT	7.40 ft	2.25 m
LOADED DRAFT	19.81 ft	6.04 m
SUMMER FREEBOARD	3.19 ft	0.97 m
LIGHT SHIP	1,684 Lt	1711 mT
DEADWEIGHT	3,409 Lt	3,464 mT

## TONNAGE (ITC)

GRT	2,252
NRT	871

## CAPACITIES

BALLAST/DRILL WATER	132,809 USG	503 m³
POTABLE WATER	92,188 USG	349 m³
FUEL	313,602 USG	1,187 m³
LIQUID MUD	6,380 BBLS	1,014.3 m³
DRY BULK	10,000 ft³	283 m³
BRINE	2,306 BBLS	366.7 m³
BASE OIL (DUAL USE TANKS)	6,380 BBLS	1,014.3 m³

## CARGO DECK

TONNAGE	2,000 Lt	2,032.10 mT
STRENGTH	1,024 lbs/ft²	5 mT/m²
LENGTH	174 ft	53.04 m
WIDTH	44 ft	13.41 m
CLEAR AREA	7,656 ft²	711.27 m²

## MACHINERY

MAIN GENERATORS	3 x CAT 3516B 1852kW, 600VAC 60Hz, 3 ø
AUXILIARY GENERATORS	300 kW, 480VAC, 60Hz 3 ø
EMERGENCY GENERATOR	99 kW, 480VAC, 60Hz 3 ø
TOTAL INSTALLED POWER	5,775 kW (7,744 HP)
AZIMUTHING THRUSTERS	2 x Aquamaster 3001AZ, 2,500 HP (1,864 kW)
BOW THRUSTERS	1 x 800BHP Tunnel
WINDLASS	Dual Capstain McElroy MDW-150
ANCHOR / CHAIN	2 X 3500 lb. Danforth / 1.5 X 1000'

## PERFORMANCE

MAXIMUM SPEED		12 knots
CRUISING SPEED		10 knots
MAXIMUM FUEL CONSUMPTION	255 USG/Hr	19.8 Mt/day
CRUISING FUEL CONSUMPTION	215 USG/Hr	16.8 Mt/day

## DISCHARGE RATES

	USG/HR @ FT	M³/HR @ M
DRILL WATER	660 300	150 91
POTABLE WATER	660 300	150 91
FUEL	660 300	150 91
LIQUID MUD	2 x 1000 GPM @ 165 ft	227 m³/hr @ 50 m
DRY BULK	2 x 2000 ft³/hr @80 psi	56 m³/hr @ 6 bar
BRINE	1000 GPM @165 ft.	227 m³/hr @ 50 m
BASE OIL	1 x 1000 GPM @165 ft.	227 m³/hr @ 50 m

## ACCOMMODATION

CABINS/BERTHS	15 Cabins / 27 Berths
OFFICERS	4 Cabins / 4 Berth
CREW	5 Cabins / 5 Berths
PASSENGERS	4 Cabins / 16 Berths
VIP	2 Cabins / 2 Berths
LOUNGE	Seating 10 Persons
MESS	Seating 17 Persons
WALK IN REFRIGERATION	Cooler / Freezer 197 ft³ / 225 ft³

## ELECTRONICS & CONTROLS

DYNAMIC POSITIONING	Kongsberg K-POS DPS-2
DGPS	2 x C-NAV 3050
GYRO	3 x Sperry NAVIGAT X MK1
LASER REFERENCE	Fanbeam MK4
JOYSTICK	Kongsberg C-Joy
COMPASS	Magnetic
RADAR(S)	2 x Furuno & One Furuno FAR2127 ARPA
DEPTH SOUNDER	Sperry ES5000

## COMMUNICATIONS

GMDSS	Sperry A3 GMDSS
SSB	Sailor Compact 2000 SSB
VHF	2 X VHF/FM SEA model SEA-156
INMARSAT-C	Sperry H2095 B
NAVTEX	AE -900
EMAIL	Globe Wireless

## SPECIAL EQUIPMENT

LIFERAFTS	4 x 15 Man
MOB FAST RESCUE BOAT	Ambar AM420 RIB W//25HP Motor
FIFI CLASS	FIFI 1 Equivalent without Deluge
MONITORS	2 x 5,283GPM 2 x 1,200 m³/hr
ROLL REDUCTION SYSTEM	2 x Flume Type
DECK CRANE	TC-20-33-60, 19,450 lbs @ 10 ft 850 lbs @ 60 ft

## DOCUMENTATION

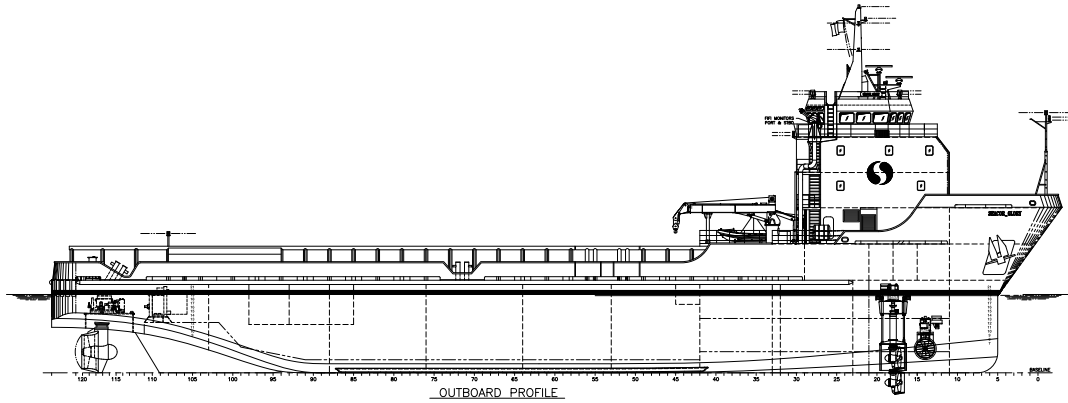
CLASS	ABS A1,AMS,DPS-2
FLAG	USA
SOLAS	Full
USCG	Sub Chapter L
OFFICIAL NUMBER	1076923
IMO	9214915
CALL SIGN	WCZ3263
YEAR BUILT	1999
BUILDER	Moss Point Marine Inc.

This specification is preliminary and subject to change without notice. Exact tank capacities, deadweight, deck cargo capacity and other figures that have been calculated and may change when the actual vessel is delivered.

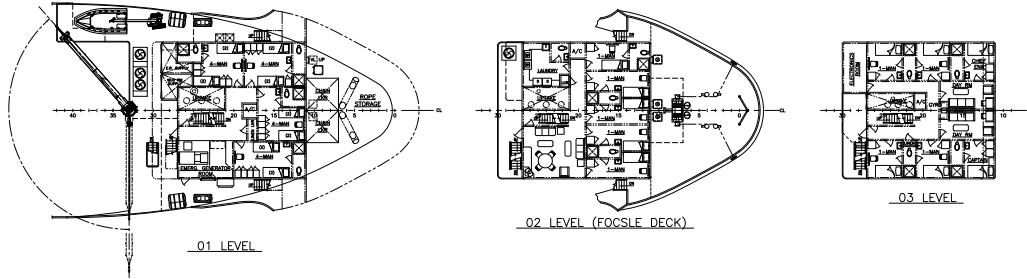
# 251' DP-2 PSV SEACOR GLORY



251' DP-2 PSV SEACOR GLORY



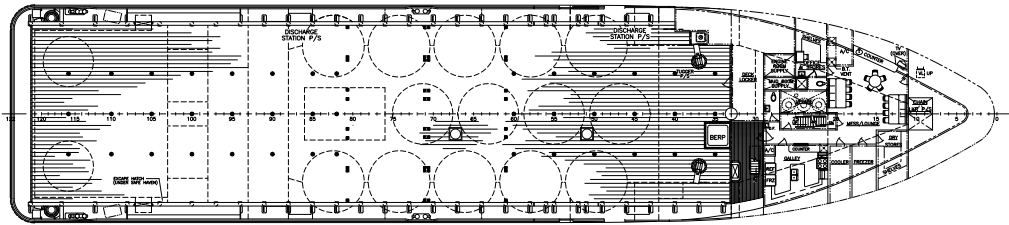
OUTBOARD PROFILE



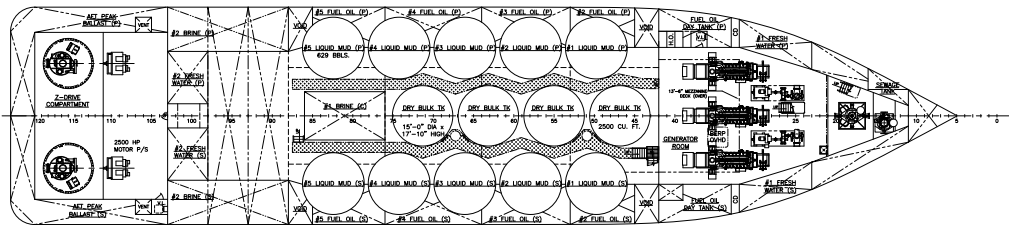
01 LEVEL

02 LEVEL (FOCSLE DECK)

03 LEVEL



MAIN DECK



HOLD PLAN

## DP Capability Plot

