

SEACOR EAGLE

CLASS 245' LIFTBOAT



LEG

NUMBER OF LEGS	3	
LEG LENGTH	245 ft.	74.7 m
LEG DIAMETER	72 in	1.8 m
LEG WALL	1.5 in	3.8 cm
LEG TOWER HEIGHT	20 ft.	6.1 m
TRIANGLE	84' P/S x 107' AFT	25.6 m P/S x 32.6 m AFT

HULL

LENGTH	137.5 ft.	41.9 m
LENGTH (BARGE ONLY)	132 ft.	40.2 m
BEAM	98 ft.	29.9 m
BEAM (BARGE ONLY)	92 ft.	28 m
HULL DEPTH	13 ft.	4 m
DESIGN DRAFT	8.46 ft.	2.6 m
REGISTERED TONNAGE	196 t / 149 t	
INTERNATIONAL TONNAGE	1,313 t / 393 t	

PAD

PAD LENGTH	40 ft.	12.2 m
PAD WIDTH	16 ft.	4.9 m
PAD DEPTH	4 ft.	1.2 m
PAD LOADING	N/A	
DECK LOADING	N/A	
	Raked at both ends	

CRANE

	PORT	STBD FWD	STBD AFT
MAKE	Energy Cranes	Energy Cranes	Energy Cranes
MODEL	EC1100	EC65T	EC50
LOAD RATINGS	175 TONS	50 TONS	25 TONS
BOOM TYPE	Lattice	Telescopic	Box
BOOM LENGTH	115 ft.	50-70 ft.	70 ft.
	35.1 m	15 - 21 m	21.3 m
CRANE INST. TYPE	Pedestal	Pedestal	Pedestal

PROPULSION

MAINS - MAKE	Caterpillar	
MAINS - MODEL	3512	
HORSEPOWER	1600	
BOW THRUSTER EQUIPPED	YES	
CLUTCH MAKE/REDUCTION	Reintjes LAF 762	5.136:1

DECK

APPROXIMATE USABLE DECK AREA	5,500 ft ²	511 m ²
MAXIMUM VARIABLE DECK LOAD	860,000 lbs.	390,089 kg

GENERATORS

GENERATOR ENGINE MAKE	2 x Caterpillar	
GENERATOR ENGINE MODEL	C9	
GENERATOR OUTPUT	2 x 215 kw	
AUX GENSET EQUIPPED	1 x John Deere 6068	
	1 x 99 kw	

CAPACITIES

DIESEL FUEL	32,380 USG	122.6 m ³
POTABLE WATER	21,030 USG	79.6 m ³
WATERMAKER EQUIPPED	Avail. Upon request	

ELECTRONIC AIDS & COMMUNICATIONS

COMPASS	FULLY EQUIPPED
GPS/DGPS	FULLY EQUIPPED
RADAR(S)	FULLY EQUIPPED
FATHOMETER	FULLY EQUIPPED
LOUDHAILER	FULLY EQUIPPED
SATELLITE PHONE	FULLY EQUIPPED
PRIVATE FREQ. RADIOTELEPHONE	FULLY EQUIPPED
VHF RADIO	FULLY EQUIPPED
SINGLE SIDEBAND RADIO	FULLY EQUIPPED
GMDSS	FULLY EQUIPPED

PERSONNEL ACCOMMODATIONS

TOTAL ACCOMMODATIONS	46
VIP ACCOMMODATIONS	2
CREW ACCOMMODATIONS	12
CONTRACTOR ACCOMMODATIONS	34
TRANSIT PASSENGERS	36
GALLEY & DINING	FULLY EQUIPPED
TV LOUNGE	FULLY EQUIPPED
LAUNDRY FACILITY	FULLY EQUIPPED
AIR CONDITION / HEATER	Standard Electrical Commercial Units
HELIPORT	N/A

PERFORMANCE

ESTIMATED SPEED	7 - 9 mph / 6 - 8 knots	11 - 15 kph
MAX SEPARATION, PAD TO DECK	225 ft.	68.6 m
MAX WORKING WATER DEPTH	180 ft.	54.9 m
MIN WORKING WATER DEPTH	13 ft.	4 m
MAX JACKING SOFT BOTTOM	4 ft.	1.2 m
SEA STATES HARD BOTTOM	5 ft.	1.5 m

DOCUMENTATION

CLASS	ABS
FLAG/PORT OF REGISTRY	USA /New Orleans, LA
SOLAS	CLASSED
USCG	INSPECTED
OFFICIAL NUMBER	1196599
IMO	8768995
CALL SIGN	WDG 9999
VESSEL DELIVERY DATE	2007
BUILDER	BOLLINGER SHIPYARD
ZERO DISCHARGE CAPABLE	YES
ZERO DISCHARGE READY	YES

This specification is preliminary and subject to change without notice. Exact tank capacities, deadweight, deck cargo capacity and other figures that have been calculated and may change when the actual vessel is delivered.

SEACOR EAGLE

CLASS 245' LIFTBOAT

PORT CRANE - ENERGY CRANES - MODEL EC1100

WORKING RADIUS	BOOM ANGLE (DEG)	MAIN HOIST				PERSONNEL RATED CAPACITY (LBS)	AUXILIARY HOIST		PERSONNEL RATED CAPACITY (LBS)
		EIGHT (8) PART REEVING		SIX (6) PART REEVING			TWO (2) PART REEVING		
		ONBOARD CAPACITY (LBS)	OFFBOARD CAPACITY (LBS)	ONBOARD CAPACITY (LBS)	OFFBOARD CAPACITY (LBS)		ONBOARD CAPACITY (LBS)	OFFBOARD CAPACITY (LBS)	
22.1	82	345,480	229,965	263,055	229,965	20,000	18,115	18,115	5,539
25	80.5	345,480	229,965	263,055	229,965	20,000	18,115	18,115	5,539
30	77.8	345,480	229,965	263,055	229,965	20,000	18,115	18,115	5,539
35	75.1	306,280	202,085	263,055	202,085	20,000	18,115	18,115	5,539
40	72.4	283,885	187,190	263,055	187,190	20,000	18,115	18,115	5,539
45	69.6	240,940	158,635	240,940	158,635	20,000	18,115	18,115	5,539
50	66.8	215,115	141,485	215,155	141,485	20,000	18,115	18,115	5,539
55	63.9	193,905	127,355	193,905	127,355	20,000	18,115	18,115	5,539
60	60.9	176,085	115,505	176,085	115,505	20,000	18,115	18,115	5,539
65	57.9	160,935	105,430	160,935	105,430	20,000	18,115	18,115	5,539
70	54.7	147,890	96,755	147,890	96,755	20,000	18,115	18,115	5,539
75	51.4	136,540	89,205	136,540	89,205	20,000	18,115	18,115	5,539
80	48	126,575	82,580	126,575	82,580	20,000	18,115	18,115	5,539
85	44.3	117,760	76,720	117,760	76,720	20,000	18,115	18,115	5,539
90	40.3	109,905	71,495	109,905	71,495	20,000	18,115	18,115	5,539
95	36	102,860	66,810	102,860	66,810	20,000	18,115	18,115	5,539
100	31.2	96,505	62,585	96,505	62,585	20,000	18,115	18,115	5,539
105	25.6	90,745	58,755	90,745	58,755	20,000	18,115	18,115	5,539
110	18.3	85,500	55,265	85,500	55,265	20,000	18,115	18,115	5,539
115	0	55,855	35,550	55,855	35,550	20,000	18,115	18,115	5,539

THE ABOVE RATINGS HAVE BEEN REDUCED FROM THE MAXIMUM CRANE RATINGS TO ACCOUNT FOR THE WEIGHT OF THE HOOK & BLOCK AS REQUIRED BY AFI 6TH EDITION
 THE ABOVE PERSONNEL RATINGS ARE BASED ON API 2C 6TH EDITION.

DYNAMIC LOADS BASED ON THE STANDARD C OF 2.0, UNLESS OTHERWISE STATED USE ONBOARD REEVED CAPACITIES FOR LIFTING FROM OR LANDING ON THE PLATFORM. USE OFFBOARD REEVED CAPACITIES FOR LIFTING FROM OR LANDING ON FLOATING VESSELS.

WARNING : OPERATION OF THIS EQUIPMENT BY PERSONNEL NOT QUALIFIED IS STRICTLY PROHIBITED ENERGY CRANES

MAIN HOIST RIGGING INFORMATION	AUXILIARY HOIST RIGGING INFORMATION	BOOM HOIST RIGGING INFORMATION	BASIS OF STRUCTURAL RATING
WIRE ROPE	WIRE ROPE	WIRE ROPE	DYNAMIC CONDITIONS
1.375 (IN) DIAMETER	0.75 (IN) DIAMETER	1 (IN) DIAMETER	2 (CB) DYNAMIC COEFFICIENT
2,050 (FT) LENGTH	600 (FT) LENGTH	1,120 (FT) LENGTH	DEFAULT DYNAMIC METHOD
DYFORM-34LR2160 CONSTRUCTION	DYFORM-18 CONSTRUCTION	CONSTRUCTEX CONSTRUCTION	PEDESTAL REACTIONS
123.65 (TONS) BREAKING STRENGTH	32.2 (TONS) BREAKING STRENGTH	62.5 (TONS) BREAKING STRENGTH	23,139,690 (FT-LBF) MAXIMUM MOMENT
25.9 (FPM) EIGHT (8) PART REEVING MAXIMUM AVAILABLE HOOK SPEED @ SUPPLY BOAT	75 (FPM) TWO (2) PART REEVING MAXIMUM AVAILABLE HOOK SPEED @ SUPPLY BOAT		670,978 (LBF) CORRESPONDING THRUST
220 (FT) MAXIMUM HOOK DROP	210 (FT) MAXIMUM HOOK DROP		
LOAD BLOCK	OVERHAUL BALL / LOAD BLOCK	PENDANT LINES	STANDARD OPERATING CONDITIONS
175 (TONS) STATIC LOAD RATING	15 (TONS) STATIC LOAD RATING	2.375 (IN) DIAMETER	N/A (FT) WAVE HEIGHT
116.7 (TONS) DYNAMIC LOAD RATING	10.0 (TONS) DYNAMIC LOAD RATING	55 (FT) LENGTH	N/A (MPH) WIND SPEED
58 (TONS) PERSONNEL RATING	5.0 (TONS) PERSONNEL RATING	6 X 37 IWRC EEIPS CONSTRUCTION	883,969 (FT-LBF) MAXIMUM MOMENT
PART NUMBER: 4LRC-0681 SERIAL NUMBER: 0603		300 (TONS) BREAKING STRENGTH	21,800,320 (LBF) CORRESPONDING THRUST

SEACOR EAGLE

CLASS 245' LIFTBOAT

STBD FWD - ENERGY CRANES - MODEL EC65T

WORKING RADIUS	BOOM ANGLE (DEG)	MAIN HOIST - SIX (6) PART REEVING						AUXILIARY HOIST - ANY POSITION		
		RETRACTED		BOOM ANGLE (DEG)	EXTENDED		PERSONNEL RATED CAPACITY (LBS)	SINGLE (1) PART REEVING		PERSONNEL RATED CAPACITY (LBS)
		ONBOARD CAPACITY (LBS)	OFFBOARD CAPACITY (LBS)		ONBOARD CAPACITY (LBS)	OFFBOARD CAPACITY (LBS)		ONBOARD CAPACITY (LBS)	OFFBOARD CAPACITY (LBS)	
11	80	100,000	65,000					6,000	6,000	1,840
15	74	100,000	65,000	79	54,435	34,730	6,180	6,000	6,000	1,840
20	69	84,885	55,980	75	47,525	31,135	6,180	6,000	6,000	1,840
25	62	70,495	46,410	70	42,205	27,595	6,180	6,000	6,000	1,840
30	55	57,190	37,565	66	37,935	24,760	6,180	6,000	6,000	1,840
35	48	47,555	31,155	61	34,480	22,460	6,180	6,000	6,000	1,840
40	39	40,255	26,300	57	31,565	20,525	6,180	6,000	6,000	1,840
45	28	34,525	22,490	51	29,155	18,920	6,180	6,000	6,000	1,840
50	0	29,905	19,415	46	27,120	17,565	6,180	6,000	6,000	1,840
55				40	25,380	16,405	6,180	6,000	6,000	1,840
60				32	23,890	15,420	6,180	6,000	6,000	1,840
65				23	21,280	13,680	6,180	6,000	6,000	1,840
70				0	18,960	12,140	6,180	6,000	6,000	1,840

THE ABOVE RATINGS HAVE BEEN REDUCED FROM THE MAXIMUM CRANE RATINGS TO ACCOUNT FOR THE WEIGHT OF THE HOOK & BLOCK AS REQUIRED BY AFI 6TH EDITION
THE ABOVE PERSONNEL RATINGS ARE BASED ON API 2C 6TH EDITION.

DYNAMIC LOADS BASED ON THE STANDARD C OF 2.0, UNLESS OTHERWISE STATED USE ONBOARD REEVED CAPACITIES FOR LIFTING FROM OR LANDING ON THE PLATFORM. USE OFFBOARD REEVED CAPACITIES FOR LIFTING FROM OR LANDING ON FLOATING VESSELS.

WARNING : OPERATION OF THIS EQUIPMENT BY PERSONNEL NOT QUALIFIED IS STRICTLY PROHIBITED ENERGY CRANES

MAIN HOIST RIGGING INFORMATION	AUXILIARY HOIST RIGGING INFORMATION	BASIS OF STRUCTURAL RATING	
WIRE ROPE	WIRE ROPE	DYNAMIC CONDITIONS	
0.875 (IN) DIAMETER	0.5625 (IN) DIAMETER	2 (CB) DYNAMIC COEFFICIENT	
1,295 (FT) LENGTH	310 (FT) LENGTH	DEFAULT DYNAMIC METHOD	
DYFORM-18 CONSTRUCTION	DYFORM-18 CONSTRUCTION	PEDESTAL REACTIONS	
43.8 (TONS) BREAKING STRENGTH	18.5 (TONS) BREAKING STRENGTH	RETRACTED BOOM LENGTH	3,908,550 (FT-LBF) MAXIMUM MOMENT 175,200 (LBF) CORRESPONDING THRUST
45.0 (FPM) FOUR (4) PART REEVING MAXIMUM AVAILABLE HOOK SPEED @ SUPPLY BOAT	161 (FPM) SINGLE (1) PART REEVING MAXIMUM AVAILABLE HOOK SPEED @ SUPPLY BOAT	EXTENDED BOOM LENGTH	3,833,030 (FT-LBF) MAXIMUM MOMENT 108,970 (LBF) CORRESPONDING THRUST
30.0 (FPM) SIX (6) PART REEVING MAXIMUM AVAILABLE HOOK SPEED @ SUPPLY BOAT	214 (FT) MAXIMUM HOOK DROP		
198 (FT) MAXIMUM HOOK DROP			
LOAD BLOCK	OVERHAUL BALL / LOAD BLOCK	STANDARD OPERATING CONDITIONS	
50 (TONS) STATIC LOAD RATING	7 (TONS) STATIC LOAD RATING	N/A (FT) WAVE HEIGHT	
33.3 (TONS) DYNAMIC LOAD RATING	4.7 (TONS) DYNAMIC LOAD RATING	N/A (MPH) WIND SPEED	
16.7 (TONS) PERSONNEL RATING	2.3 (TONS) PERSONNEL RATING	RETRACTED BOOM LENGTH	240,785 (FT-LBF) MAXIMUM THRUST 3,891,000 (LBF) CORRESPONDING MOVEMENT
		EXTENDED BOOM LENGTH	170,205 (FT-LBF) MAXIMUM THRUST 1,805,845 (LBF) CORRESPONDING MOVEMENT

PART NUMBER: 4LRC-0680
SERIAL NUMBER: 0602

SEACOR EAGLE

CLASS 245' LIFTBOAT

STBD AFT - ENERGY CRANES - MODEL EC50

WORKING RADIUS	BOOM ANGLE (DEG)	MAIN HOIST			AUXILIARY HOIST		
		FOUR (4) PART REEVING		PERSONNEL RATED CAPACITY (LBS)	SINGLE (1) PART REEVING		PERSONNEL RATED CAPACITY (LBS)
		ONBOARD CAPACITY (LBS)	OFFBOARD CAPACITY (LBS)		ONBOARD CAPACITY (LBS)	OFFBOARD CAPACITY (LBS)	
10.15	82	50,000	33,335	3,976	6,000	6,000	1,840
15	78	50,000	33,335	3,976	6,000	6,000	1,840
20	74	50,000	33,255	3,976	6,000	6,000	1,840
25	69	39,750	26,165	3,976	6,000	6,000	1,840
30	65	32,530	21,365	3,976	6,000	6,000	1,840
35	61	27,320	17,900	3,976	6,000	6,000	1,840
40	56	23,380	15,280	3,976	6,000	6,000	1,840
45	51	20,300	13,230	3,976	6,000	6,000	1,840
50	45	17,820	11,580	3,976	6,000	6,000	1,840
55	39	15,780	10,225	3,976	6,000	6,000	1,840
60	32	14,080	9,095	3,976	6,000	6,000	1,840
65	24	12,630	8,130	3,976	6,000	6,000	1,840
70	8	11,380	7,300	3,976	6,000	6,000	1,840
71	0	11,250	7,210	3,976	6,000	6,000	1,840

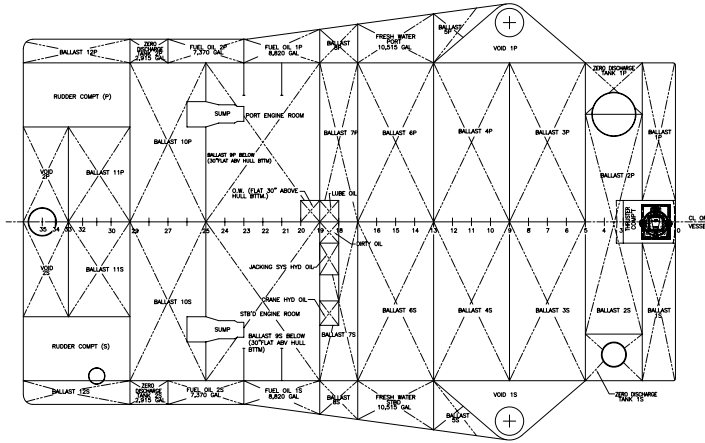
THE ABOVE RATINGS HAVE BEEN REDUCED FROM THE MAXIMUM CRANE RATINGS TO ACCOUNT FOR THE WEIGHT OF THE HOOK & BLOCK AS REQUIRED BY AFI 6TH EDITION
THE ABOVE PERSONNEL RATINGS ARE BASED ON API 2C 6TH EDITION.

DYNAMIC LOADS BASED ON THE STANDARD C OF 2.0, UNLESS OTHERWISE STATED USE ONBOARD REEVED CAPACITIES FOR LIFTING FROM OR LANDING ON THE PLATFORM. USE OFF-BOARD REEVED CAPACITIES FOR LIFTING FROM OR LANDING ON FLOATING VESSELS.

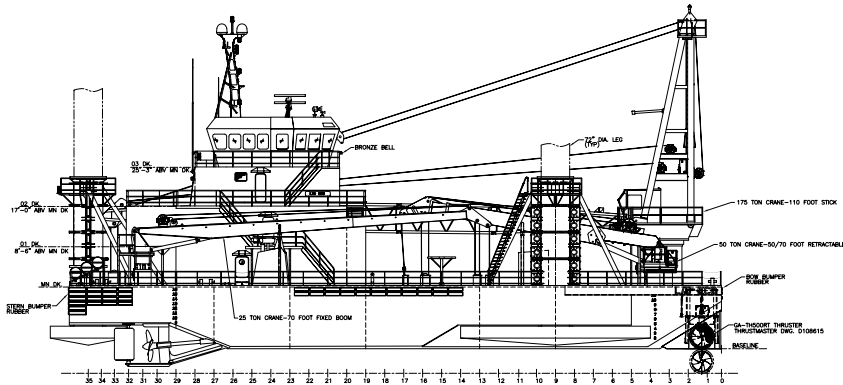
WARNING : OPERATION OF THIS EQUIPMENT BY PERSONNEL NOT QUALIFIED IS STRICTLY PROHIBITED ENERGY CRANES

MAIN HOIST RIGGING INFORMATION	AUXILIARY HOIST RIGGING INFORMATION	BASIS OF STRUCTURAL RATING
WIRE ROPE	WIRE ROPE	DYNAMIC CONDITIONS
0.75 (IN) DIAMETER	0.5625 (IN) DIAMETER	2 (CB) DYNAMIC COEFFICIENT
830 (FT) LENGTH	310 (FT) LENGTH	DEFAULT DYNAMIC METHOD
DYFORM-18 CONSTRUCTION	DYFORM-18 CONSTRUCTION	PEDESTAL REACTIONS
32.4 (TONS) BREAKING STRENGTH	18.5 (TONS) BREAKING STRENGTH	2,132,140 (FT-LBF) MAXIMUM MOMENT
41.3 (FPM) FOUR (4) PART REEVING MAXIMUM AVAILABLE HOOK SPEED @ SUPPLY BOAT	161 (FPM) SINGLE (1) PART REEVING MAXIMUM AVAILABLE HOOK SPEED @ SUPPLY BOAT	133,545 (LBF) CORRESPONDING THRUST
178.0 (FT) MAXIMUM HOOK DROP	190.0 (FT) MAXIMUM HOOK DROP	
LOAD BLOCK	OVERHAUL BALL / LOAD BLOCK	STANDARD OPERATING CONDITIONS
25 (TONS) STATIC LOAD RATING	7 (TONS) STATIC LOAD RATING	N/A (FT) WAVE HEIGHT
16.7 (TONS) DYNAMIC LOAD RATING	4.7 (TONS) DYNAMIC LOAD RATING	N/A (MPH) WIND SPEED
8.3 (TONS) PERSONNEL RATING	2.3 (TONS) PERSONNEL RATING	159,520 (FT-LBF) MAXIMUM THURST
PART NUMBER: 4LRC-0679 SERIAL NUMBER: 0601		1,508,215 (LBF) CORRESPONDING MOVEMENT

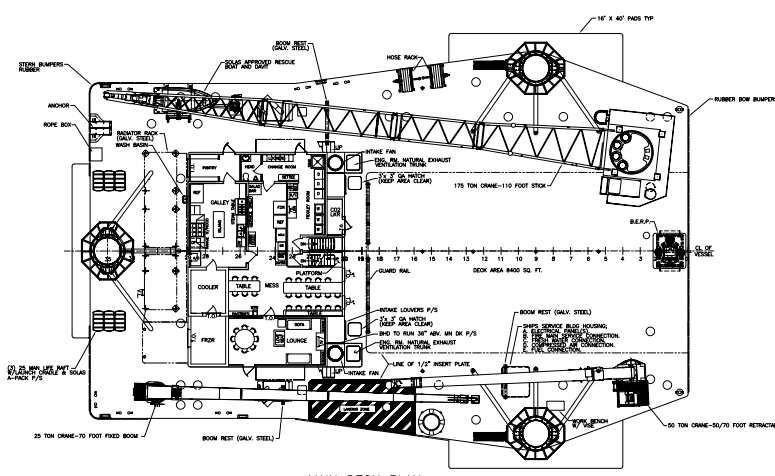
**SEACOR EAGLE
CLASS 245' LIFTBOAT**



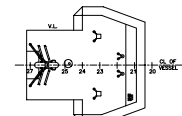
HOLD PLAN



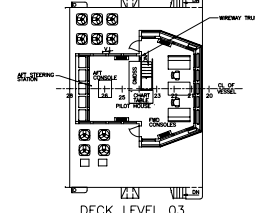
PROFILE



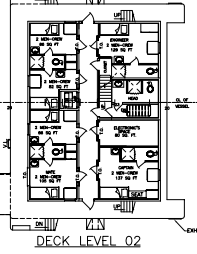
MAIN DECK PLAN



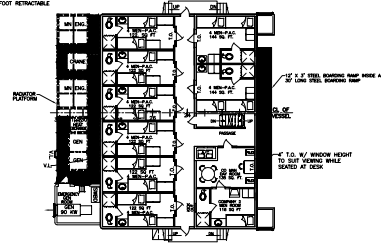
TOP OF PILOTHOUSE



DECK LEVEL 03



DECK LEVEL 02



DECK LEVEL 01