

236' PSV-DP2 SEABULK AFRICA



236' PSV-DP2 SEABULK AFRICA

MAIN PARTICULARS

LENGTH OVERALL	71.90 m	235.83 ft
LENGTH BP	66.8 m	219.15 ft
BEAM	16 m	52.00 ft
DEPTH	7.00 m	23.00 ft
LIGHT DRAFT	2.35 m	7.70 ft
LOADED DRAFT	5.91 m	19.39 ft
LIGHTSHIP	1,632 MT	1,606 LT
DEADWEIGHT	3,292 MT	3,240 LT
TONNAGE (ITC)	2,150 GT	997 NT

CAPACITIES

BALLAST/DRILL WATER	1,345 m ³	355,311 USG
POTABLE WATER	464 m ³	122,589 USG
FUEL OIL	1,048 m ³	276,852 USG
LIQUID MUD	977 m ³	6,147 BBLS
DRY BULK	320 m ³	11,300 ft ³
BRINE	391 m ³	2,459 BBLS
BASE OIL	204 m ³	1,283 BBLS

CARGO DECK

TONNAGE	1500 MT.	1476 LT.
STRENGTH	5 T/m ²	1,024 lbs/ft
CLEAR DECK LENGTH	50.56 m	165.88 ft
CLEAR DECK WIDTH	13.50 m	44.29 ft
CLEAR DECK SPACE	683 m ²	7,347 ft ²

MACHINERY

MAIN ENGINES	2 x Rolls Royce/Bergen KRBM9 2005 KW-2725 BHP
SHAFT GENERATORS	2 x 1,280 KW / 1600 KVA @ 1800 RPM
AUXILIARY GENERATORS	2 x Volvo Penta - 248 KW / 300 KVA
EMERGENCY GENERATOR	1 x Volvo Penta - 60 KW / 72KVA
REDUCTION GEARS/RATIO	2 x Kamewa-Ulstein 600AGSC-KP / 4.19:1
PROPELLERS	2 x 4 Blade 2900 mm diameter (CPP)
RUDDERS	2 x Rolls Royce High Lift Rudder
BOW THRUSTERS	2 x TUNNEL Kamewa-Ulstein 590 KW - 792 HP
STERN THRUSTERS	2 x TUNNEL Kamewa-Ulstein 590 KW - 792 HP

DECK EQUIPMENT

TUGGER WINCHES	2 x Brattvaag hydraulic, 10t, 0-16m/min
CAPSTANS	2 x Brattvaag hydraulic, 8t, 0-18m/min
WINDLASS	Rolls Royce BMG 41
ANCHORS	2 x 2460 kg plus one spare
ANCHOR CHAINS	2 x 38mm 247.5 + 220m NVK3
ROLL REDUCTION SYSTEM	4 x Ulstein roll reduction tanks
CRANE	ABAS 3T @ 16m radius

PERFORMANCE

MAXIMUM SPEED	14.60 knots
SERVICE SPEED	12.00 knots
ECONOMICAL SPEED	10.00 knots
FUEL CONSUMPTION AT MAX SPEED	19.5 t/day
FUEL CONSUMPTION AT SERVICE SPEED	13.6 t/day
FUEL CONSUMPTION AT ECONOMICAL SPEED	9.8 t/day
IN PORT	0.8 t/day
STANDBY AT SEA W/DP OPERATION	5.3 t/day (2.1 t/day w/out DP)

DISCHARGE RATES

DRILL WATER	200 t/hr @ 90 m per head
POTABLE WATER	250 t/hr @ 9 bar
FUEL OIL	200 t/hr @ 90 m per head
LIQUID MUD	2.5 SG 1 x 100 t/hr @ 18 bar
DRY BULK	25.2 t/hr @ 5.6 bar
BRINE	2.5 SG 1 x 100 t/hr @ 18 bar
BASE OIL	1 x 150 t/hr @ 9 bar

ACCOMMODATIONS

BERTHS	34 (berths in 15 cabins)	4 x 1 berth cabins
CREW MAX.	14	7 x 2 berth cabins
OTHERS (INCLUDING HOSPITAL)	20	4 x 4 berth cabins

ELECTRONICS & CONTROLS

JOYSTICK	Poscon - fore and aft bridge, wandering lead
DEPTH SOUNDER	2 x Seatex DPS-1000
DYNAMIC POSITIONING	Kongsberg SDP 21
AUTOPILOT	1 x Anschutz 20
GMDSS	1 x Anschutz with console and repeaters
GMDSS PORTABLE RADIO	A3
GPS	3
GYRO	2 pcs Navigat MK1 digital, 1 pc Standard 20 Gynstar
RADAR(S)	1 x Furuno true motion FR-2115 3cm 1 x ARPA Furuno FAR-2835S 10cm 1 x Furuno DS-70 doppler
INMARSAT-C	2 x Sat C Felcom 15
SSB	Furuno FS1562-25
NAVTEX	1 x Furuno FS-1562-25 duplex MF/HF 250W
VHF	2 x Furuno FM-8700 simplex/duplex
VHF PORTABLE	3 x Motorola Gp340

SPECIAL EQUIPMENT

FIFI CLASS	FIFI 1 Equivalent without Deluge
MONITORS	2 x 1200 m ² /hr 2 x 5,283 GPM
THROW HEIGHT/LENGTH	75 m / 120 m
LIFERAFT	4 x 25 man capacity
RESCUE BOAT	1 x 6 man x 25 HP (Midget MK II)
FRC	1 x Noreq - 15P
PIW RECOVERY	1 x Dacon Rescue Scoop.

DOCUMENTATION

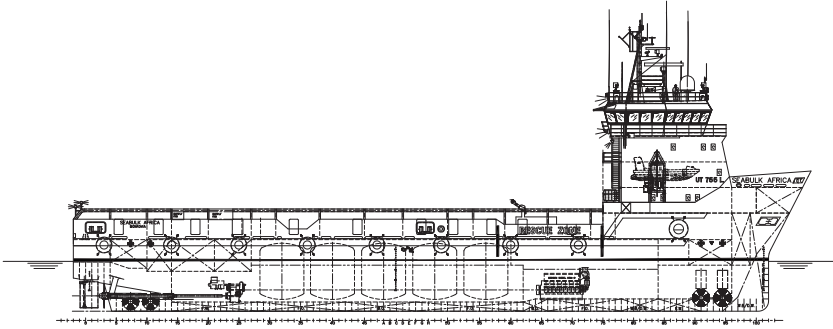
CLASS	DNV A1-SF, EO - DYNPOS AUTR
FLAG	Liberia
SOLAS	Full
YEAR BUILT	2003
OFFICIAL NUMBER	11843
IMO	9267039
CALL SIGN	HP-6959
BUILDER	SIMEK AS

This specification is preliminary and subject to change without notice. Exact tank capacities, deadweight, deck cargo capacity and other figures that have been calculated and may change when the actual vessel is delivered.

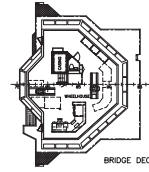
236' PSV-DP2 SEABULK AFRICA



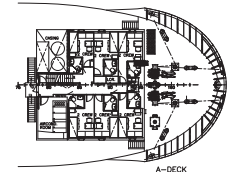
236' PSV-DP2 SEABULK AFRICA



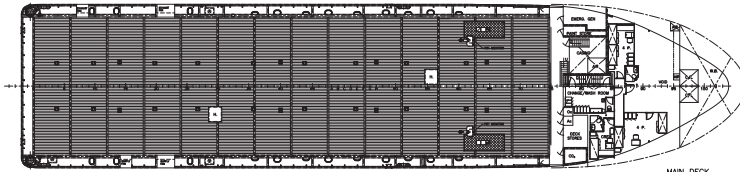
PROFILE



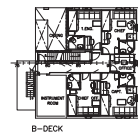
BRIDGE DECK



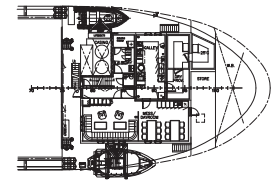
A-DECK



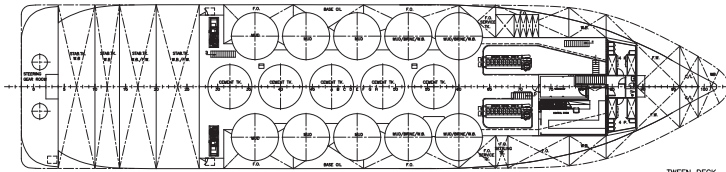
MAIN DECK



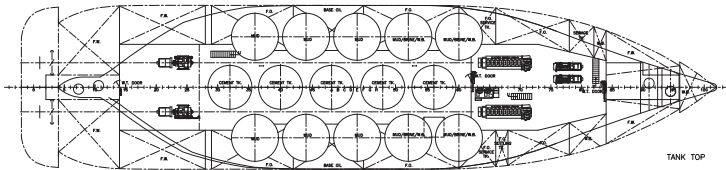
B-DECK



FORECASTLE DECK



TWEEN DECK



TANK TOP

