

150' MINISUPPLY SEACOR MERCHANT



150' MINISUPPLY SEACOR MERCHANT

MAIN PARTICULARS

LENGTH OVERALL	150 ft.	46 m
LENGTH BP	136 ft.	41 m
BEAM	36 ft.	11 m
DEPTH	12 ft.	4 m
LIGHT DRAFT	5 ft.	2 m
LOADED DRAFT	10 ft.	3 m
SUMMER FREEBOARD	2 ft.	1 mm
LIGHTSHIP	463 LT.	471 MT.

CAPACITIES

DRILL WATER (100%)	76,500 USG	290 m ³
FUEL (98%)	98,744 USG	374 m ³
LIQUID MUD (98%)	1,098 BBLs	175 m ³
POTABLE WATER (98%)	14,984 USG	57 m ³
DEADWEIGHT	380 LT.	386 MT.

CARGO DECK

TONNAGE	285 LT.	290 MT.
STRENGTH	540 lbs./ft. ²	2.64 MT./m ²
LENGTH	65 ft.	20 m
WIDTH	29.5 ft.	9 m
CLEAR AREA	1,615 ft. ²	150 m ²

TONNAGE

GRT ITC	498 tons
NRT ITC	149 tons

MACHINERY

MAIN ENGINES	2 - Caterpillar 3508B	
BRAKE HORSEPOWER	2400 HP	
REDUCTION GEARS	2 x Twin Disc MG 5301	
GEAR RATIO	5:1	
PROPELLERS	2 x 72 x 58	
RUDDERS	2 x Spade Independent	
AUXILIARY GENERATORS	2 x 105 kW Caterpillar 3306	
BOW THRUSTER	365 HP / 272 kW Tunnel	
STERN THRUSTER	262 HP / 195 kW Tunnel	
LIQUID MUD CIRCULATION	Vortex Venture Nozzles	
CRANE	EBI -TC 20	
	9T SWL @ 3m - 73° angle Boom fully retracted 33 ft.	
	3T SWL @ 9.1m - 27° angle Boom fully retracted 33 ft.	
	4.8T SWL @ 3.5m - 79° angle Boom fully extended 60 ft.	
	0.3T SWL @ 18.3m - 0° angle Boom fully extended 60 ft.	

PERFORMANCE

MAXIMUM SPEED	12 knots	
CRUISING SPEED	10 knots	
MAXIMUM FUEL CONSUMPTION	82 USG/Hr	7 m ³ /24 Hrs
CRUISING FUEL CONSUMPTION	64 USG/Hr	6 m ³ /24 Hrs

DISCHARGE RATES

DRILL WATER	400 USG/min @ 80 ft.	91 m ³ /Hr @ 24 m
POTABLE WATER	400 USG/min @ 80 ft.	91 m ³ /Hr @ 24 m
FUEL OIL	400 USG/min @ 80 ft.	91 m ³ /Hr @ 24 m
LIQUID MUD	700 USG/min @ 150 ft.	159 m ³ /Hr @ 46 m

ACCOMMODATIONS

CABINS/BERTHS	9/30	
CABIN BREAKDOWN	1 x Capt. + 1 x C/E x2 bunks each	4 berths
	1 x Crew x4 bunks each	4 berths
	2 x VIP Pax 1 bunk each	2 berths
	1 x Crew x4 bunks each	4 berths
	1 x Pax 4 bunks each	4 berths
	1 x Crew x6 bunks each	6 berths
	1 x Pax 6 bunks each	6 berths
	TOTAL	30 berths
OFFICERS	4	
CREW	8	
VIP	2	
PASSENGERS	16	
MESS	20	

ELECTRONICS & CONTROLS

DEPTH RECORDER	1 Furuno LS 6000	
DP	DP-1 Kongsberg C-Pos/C-Joy	
GPS	1 Furuno GP31	
RADAR(S)	Furuno 1932 Mark-2	
HF RADIO	1 Furuno FS 1503	
SSB	2 Furuno FS-1503/ICOM ISM 710	
INTERNET E-MAIL	Globe Wireless	
VHF	ICOM/IC-M50h (2 PCS)	
	Furuno FM 8800s (2 PCS)	
AUTOPILOT	Navitron NT 921G	
WEATHER RADIO	XM	
ECS	Rose Point Version 2.0.9075-1300	
GMDSS RADIO A3	Furuno - Felcom 15	

SPECIAL EQUIPMENT

WINDLASS	Coastal Marine Equipment 2W100 31-136	
EXTERNAL FIFI	1900 GPM	432 m ³ /h
NUMBER OF MONITORS	1	

DOCUMENTATION

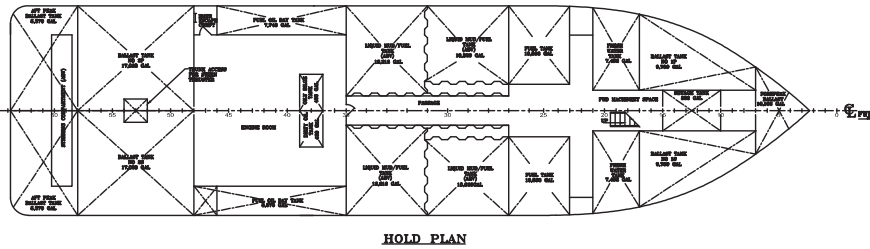
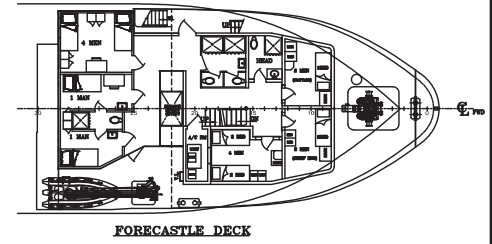
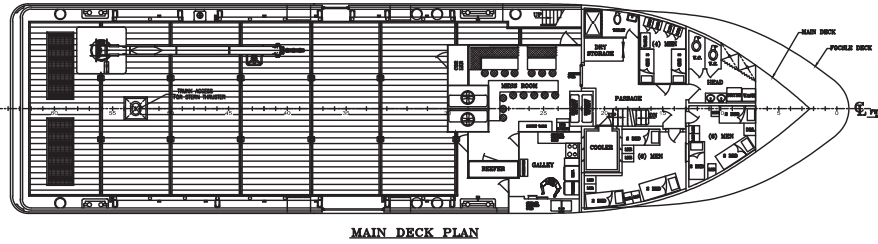
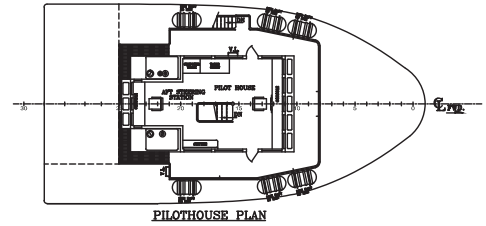
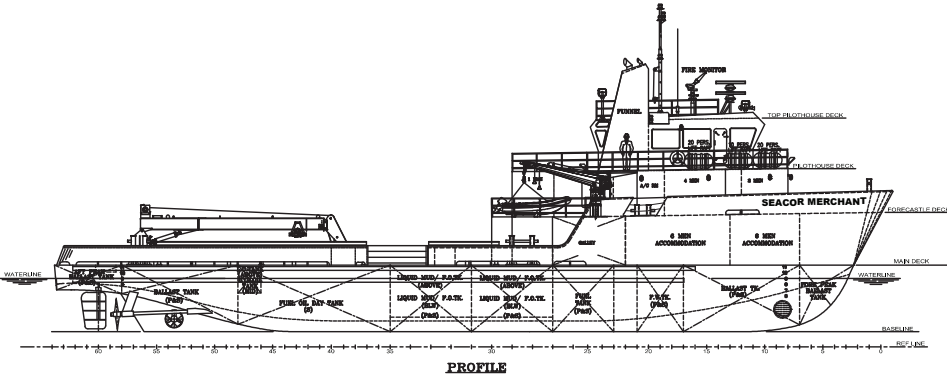
CLASS	BV	
FLAG	Marshall Islands	
YEAR BUILT	2002	
OFFICIAL NUMBER	3598	
BUILDER	Bollinger Lockport, LA. USA	

This specification is preliminary and subject to change without notice. Exact tank capacities, deadweight, deck cargo capacity and other figures that have been calculated and may change when the actual vessel is delivered.

150' MINISUPPLY SEACOR MERCHANT



150' MINISUPPLY SEACOR MERCHANT



REACH M	FULLY RET. 33' MAXIMUM REACH				EXTENDED 60' REACH		
	BOOM ANG. DEG.	LOAD LINE KGS.		BOOM ANG. DEG.	LOAD LINE KGS.		
		OFFBOARD	ONBOARD		OFFBOARD	ONBOARD	
3.0	73°	---	10,000	81°	3,844	5,489	
4.6	64°	---	8,822	76°	3,073	4,735	
6.1	54°	---	6,929	71°	2,540	3,935	
7.6	43°	---	4,871	66°	2,166	3,374	
9.1	27°	---	3,340	60°	2,007	3,136	
10.1	0°	---	2,523	---	---	---	
10.7				55°	1,769	2,778	
12.2				49°	1,418	2,251	
13.7				42°	975	1,678	
15.2				34°	680	1,500	
16.8				24°	408	810	
18.3				0°	159	363	

