

10,800 HP DP-2 AHTS SEABULK SOUTH ATLANTIC



10,800 HP DP-2 AHTS SEABULK SOUTH ATLANTIC - FIRE FIGHTER CLASS 1

DIMENSIONS

LENGTH OVERALL	68.95 m	226.15 ft
BREADTH MLD	15.50 m	50.84 ft
DEPTH	7.00 m	22.96 ft
LIGHT DRAFT	4.15 m	13.61 ft
MAX DRAFT	5.90 m	19.32 ft
DEADWEIGHT	2,380 MT	2,342 LT
TONNAGE	2,085 GT	

CAPACITIES

BALLAST/DRILL WATER	1,055.7 m ³	278,886 USG
FUEL OIL	828.7 m ³	218,919 USG
POTABLE WATER	976.6 m ³	257,831 USG
LIQUID MUD	439.7 m ³	2,765 BBLS
BRINE	459.2 m ³	2,888 BBLS
DRY BULK	224.1 m ³	7,914 ft ³

CARGO DECK

TONNAGE	900 MT	886 LT
DECK STRENGTH	5 mt/m ²	1,023 lbs/ft ²
LENGTH	37.5 m	123 ft
WIDTH	13.2 m	43 ft
CLEAR AREA	500 m ²	5,382 ft ²

TOWING & ANCHOR HANDLING

AHT WINCH	Ulstein Brattvaag, triple-drum waterfall, hyd. 300 t line pull and 450 t brake load (800 m water depth)
AH DRUM WIRE CAPACITY	2 x 1200 m of 76 mm wire diameter
TOWING DRUM WIRE CAPACITY	1 x 1500 m of 76 mm wire diameter
SPOOLING DRUM	3 x 1500 m of 76 mm, 7.6 t pull, 0-48 m/min
TOW WIRE	1200 m of 76 mm diameter
SPARE TOW WIRE	1500 m of 76 mm diameter
ANCHOR HANDLING WIRE	2 x 600 m of 76 mm diameter
CHAIN LOCKERS	194.7 m ³
CHAIN RIG CAPSTAN	2 x hydraulic cable lifter, 140 t pull for 82 mm
AH TONG	2 x hydraulic retractable, 450 t SWL
TOWING PINS	4 x hydraulic retractable, 240 t SWL
STERN ROLLER	5.0 m x 2.5 m diameter, 450 t SWL
ANCHOR WIRES	2 x 220 m of 38 mm diameter cable
TUGGER WINCHES	2 x Brattvaag hydraulic 10 t, 0-38 m/min
CAPSTANS	2 x Brattvaag hydraulic 10 t, 0-22 m/min
WINDLASS	2 x 38 mm, 247m + 220m, 11.5 t line pull
DECK CRANE	1 x ABAS knuckle type 2 t at 13 m reach
ANCHORS	2 x 2460 kgs plus one spare
J HOOK	1 x Chain chaser 150 t SWL
GRAPNEL HOOK	1 x 150 t SWL

MACHINERY

MAIN ENGINES	2 x Bergen BRM9, 5,400 BHP (4126 kW) @ 750 RPM
BRAKE HORSEPOWER	10,800 BHP
BOW THRUSTERS	2 x 590 KW tunnel thrusters type 150-TV
STERN THRUSTER	2 x 590 KW tunnel thruster type 150-TV
PROPELLERS	2 x 3900mm CPP Rolls-Royce 1500 AGSC
RUDDERS	2 x High lift independent with flaps
BOLLARD PULL	133 MT
AUXILIARIES GENERATORS	2 x CAT 3406, 320Kw-450V-60Hz
SHAFT GENERATORS	2 x 1600 KW-450V-60Hz (3200 KW total)
EMERGENCY GENERATOR	1 x CAT 65 KW-450V-60Hz

PERFORMANCE

MAXIMUM SPEED	16 kts on about 36.5 t/day
SERVICE SPEED	13 kts on about 18.2 t/day
ECONOMIC SPEED	10 kts on about 10.5 t/day
IN PORT	0.8 t/day
STAND BY AT SEA	5.0 t/day

DISCHARGE RATES

FUEL OIL	200 m ³ /hr	880 USG/Min
BALLAST / DRILL WATER (2 SPD)	130-200 m ³ /hr	572-880 USG/Min
POTABLE WATER	200 m ³ /hr	880 USG/Min
LIQUID MUD	125 m ³ /hr	550 USG/Min
BRINE	75 m ³ /hr	330 USG/Min
DRY BULK (FREE AIR)	23 m ³ /min	882 ft ² /Min

ACCOMMODATION

BUNKS	16 in 12 cabins (including hospital berths)
CREW MAXIMUM	12
PASSENGERS	2
HOSPITAL BERTHS	2

ELECTRONICS & CONTROLS

DYNAMIC POSITIONING	DPS Class 2, Rolls Royce ICON
JOYSTICK	RR Poscon Joystick fore and aft
ERN	98.3 : 98.5 : 71.9
LASER RADAR	1 x CYSCAN
DGPS	2 x CNAV 3050
GYRO	3 x TTS Meridian
AUTOPILOT	SIMRAD AP 9MK-3
GMDSS	A1 + A2 + A3
RADARS	1 x 3 cm and 1 x 10 cm ARPA Raytheon
ECHO SOUNDER	Furuno FE-700
INMARSAT-C	Furuno Felcom 12
NAVTEX	Furuno N-300
SSB	Furuno FS-1562-25, 250 W
VHF AND PORTABLE VHF	3 x Furuno FM-8700 / 4 x Motorola GP-900

SPECIAL EQUIPMENT

EXTERNAL FIF PUMP	2 x 1,500 m ³ /hr
MONITORS	2 x 1,200 m ³ /hr
THROW HEIGHT/LENGTH	75m/120m
MOB FAST RESCUE CRAFT	1 x Norsafe MK-II 24hp
RESCUE ZONES / NETS	2 and 2
DECK CRANE	1 x ABAS knuckle type 2 t at 13 m each
DISPERSANT STORAGE	5 m ³
DISPERSANTS BOOMS	2 x 6 m

DOCUMENTATION

YEAR	May 2003
BUILDER	Brevik Construction A/S, Brevik (UT-710 design)
CLASS	DNV-1A1-FiFi-SF-E0-DYNPOS-AUTR-DP2
FLAG / PORT OF REGISTRY	Marshall Islands / Majuro
CALL SIGN	V7QD9
OFFICIAL NUMBER	3339
IMO NUMBER	9269506

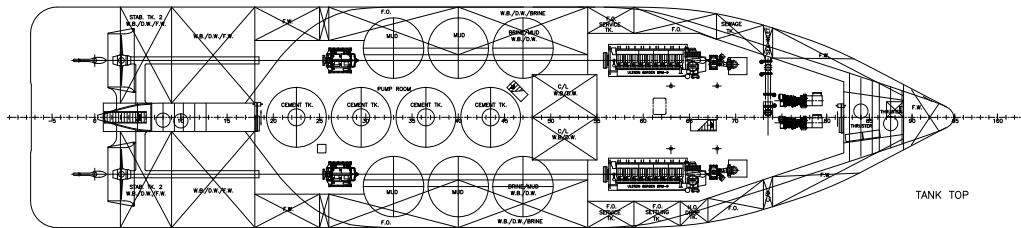
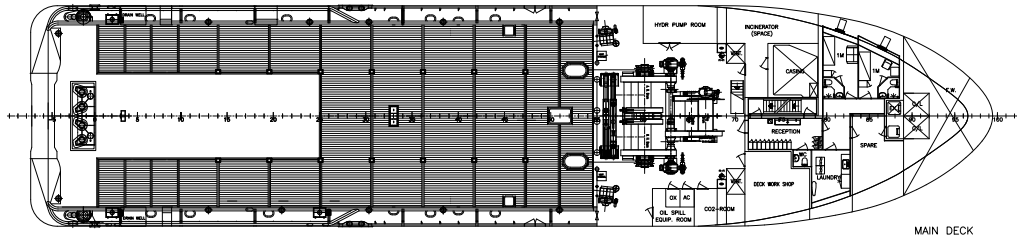
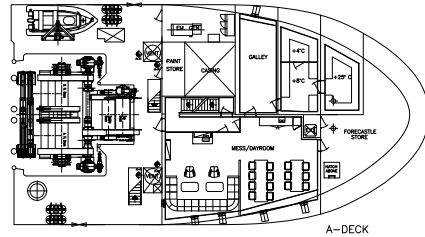
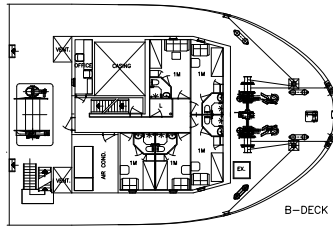
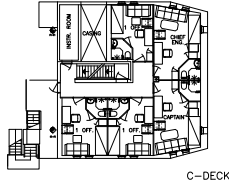
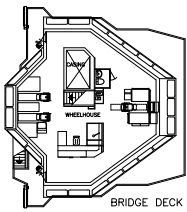
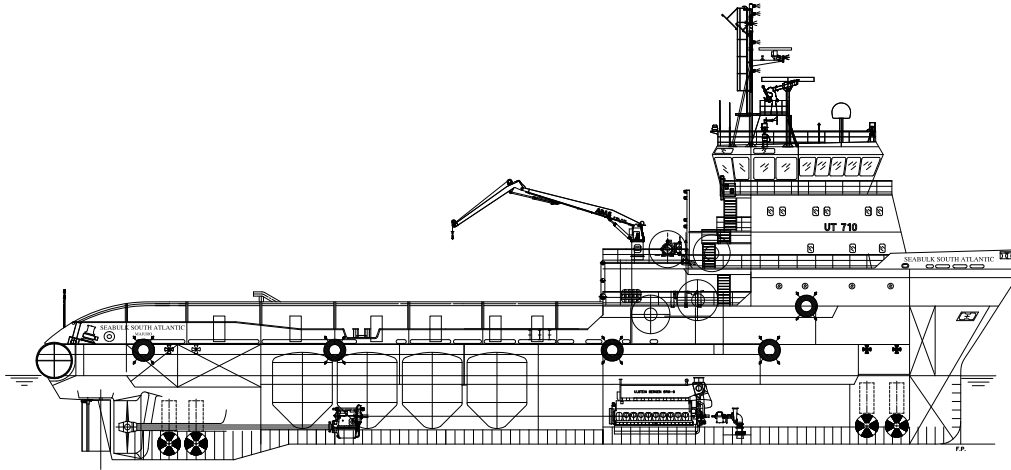
This specification is preliminary and subject to change without notice. Exact tank capacities, deadweight, deck cargo capacity and other figures that have been calculated and may change when the actual vessel is delivered.

r101415

10,800 HP DP-2 AHTS SEABULK SOUTH ATLANTIC



10,800 HP DP-2 AHTS SEABULK SOUTH ATLANTIC - FIRE FIGHTER CLASS 1



DP CAPABILITY

